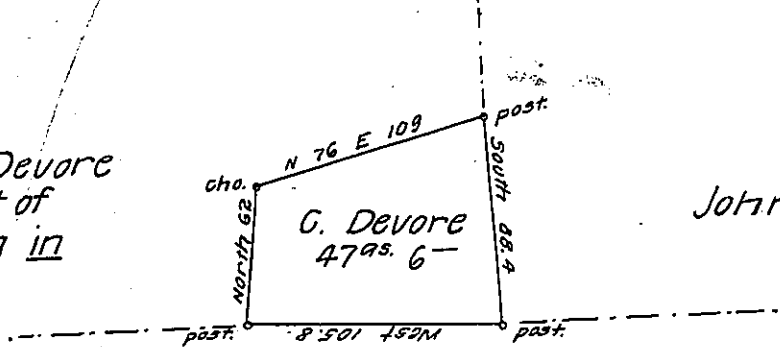


Cornelius Devore
in right of
Geo. Aston in



John Gline

Maryland line

Situate in Londonderry Township Bedford County containing
 47 acres 6 perches and the usual allowance of six per cent for
 Roads &c Surveyed 6th day of May A.D. 1862 in pursuance of a
 Warrant granted to Cornelius Devore dated the 10th April A.D.
 1861

Sam^l Ketterman

To James P. Barr

G.S.

S.G.

IN TESTIMONY that the above is a copy of the original remaining on file in
 the Department of Internal Affairs of Pennsylvania, made
 conformably to an Act of Assembly approved the 16th day of
 February 1833, I have hereunto set my hand and caused
 the Seal of said Department to be affixed at Harrisburg,
 this eleventh day of November 1907.

Henry Houck
 Secretary of Internal Affairs.